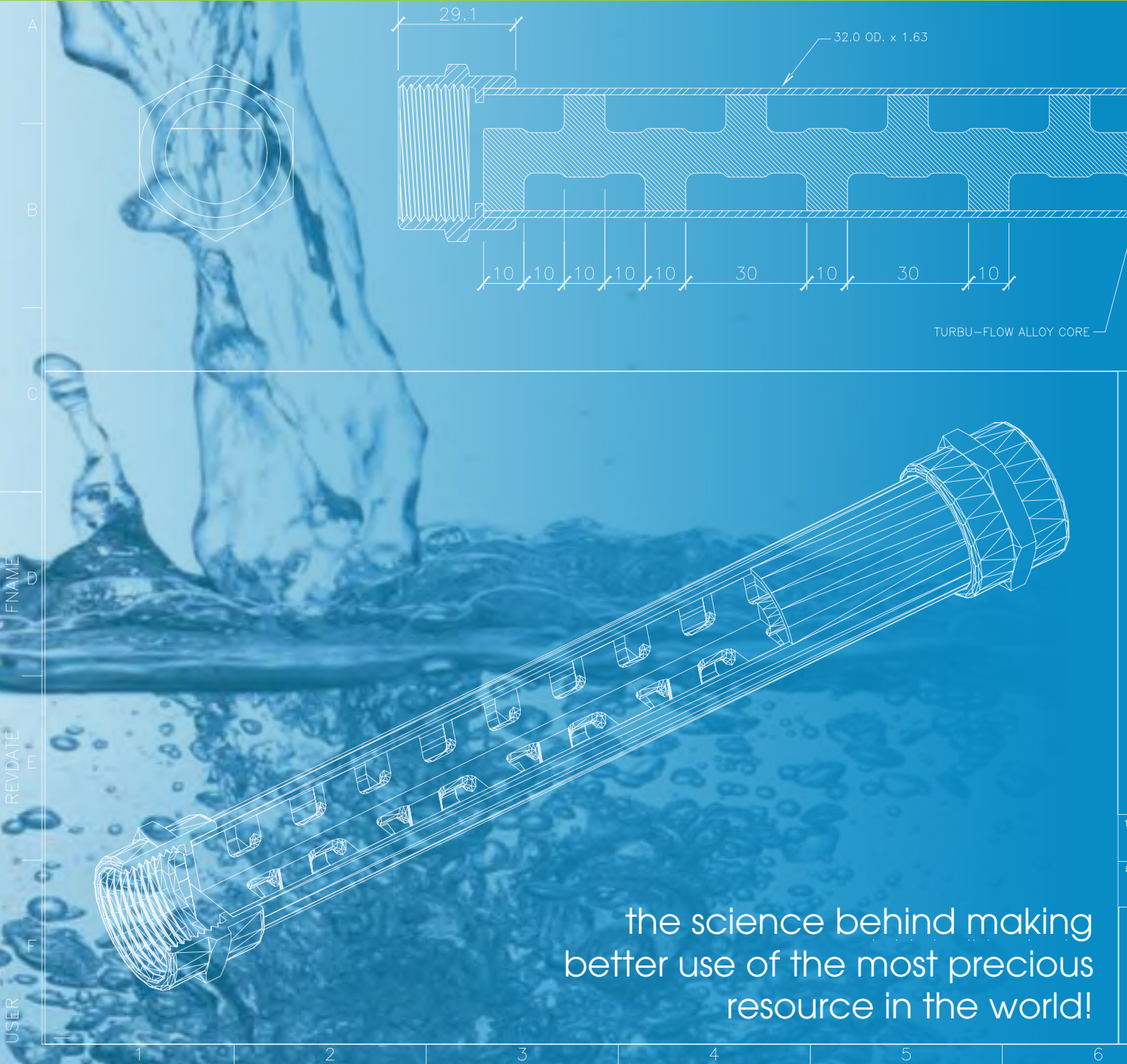


THE PERFECT HARDWATER SOLUTION

technical INFORMATION



the science behind making
better use of the most precious
resource in the world!

there is **only one** perfect solution

softerwaterconditioners.com | Australian Made & Owned Since 1980



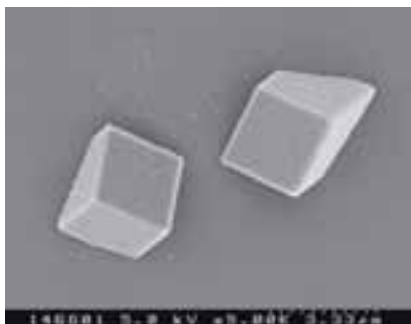
**SOFTERWATER
CONDITIONERS**

BY **TURBU-FLOW**

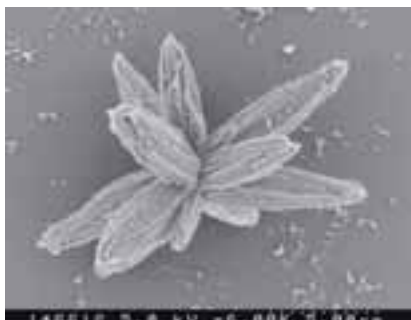
Solving hard water problems around the world!

theChemistry

1. Blended in a specialised foundry process, each alloy core is made up of a number of dissimilar metals scientifically selected from the anode and cathode galvanic scale. The alloy is not a sacrificial anode (ie; does not need replacement).
2. On contact with water thousands of intense galvanic electrochemical reactions occur along the length of the alloy core.
3. Minerals are attracted to these galvanic sites as they flow through the system.
4. The electrical charge or zeta potential of the minerals in the water is reduced allowing the minerals to aggregate and form nano sized colloids which remain in suspension rather than precipitate on pipes and associated equipment.



Minerals with high zeta potential (negative or positive electrical charge) are electrically stabilised, repel each other and precipitate on pipes and equipment.

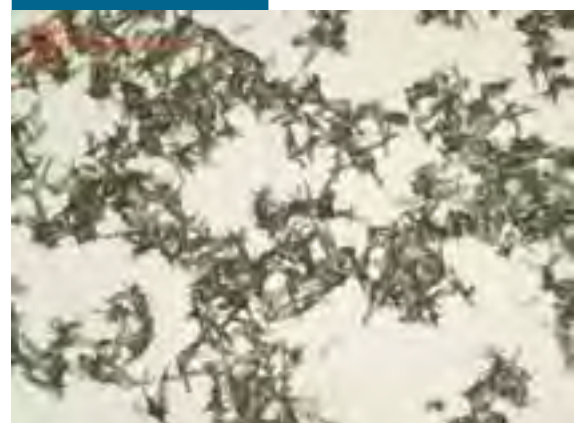


Colloids with a low zeta potential tend to aggregate and remain in suspension rather than precipitate on pipe and associated equipment.

RAW WATER



SOFTER WATER



Zeta potential is considered to be the electric potential of the minerals in water.

Softerwater lowers the Zeta potential of water by a factor of almost 2.

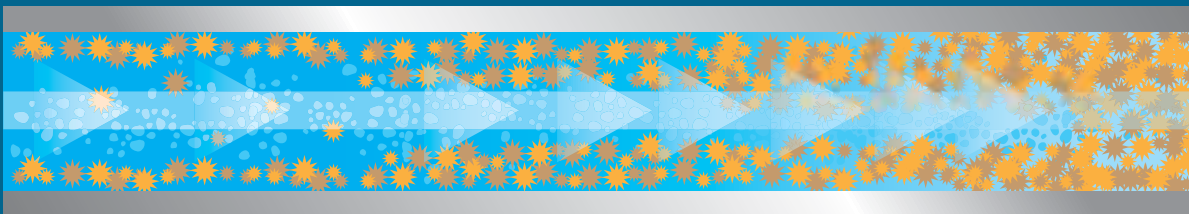
thePhysics

1. Each alloy core has been designed and engineered for a specific flow range.
2. Each core has offset discs so that there is no direct route for the water to travel. There is a definite water alloy contact.
3. Water velocity is increased as water is squeezed through the disc apertures and on through the chambers along the length of the core.
4. High and low pressure areas are developed either side of each disc.
5. Extreme turbulence is generated in each chamber along the length of the core.
6. The increase in water velocity and turbulence combine and create a mechanical washing action which prevents minerals building up on the core.

A SIMPLIFIED LOOK AT OUR SOPHISTICATED TECHNOLOGY

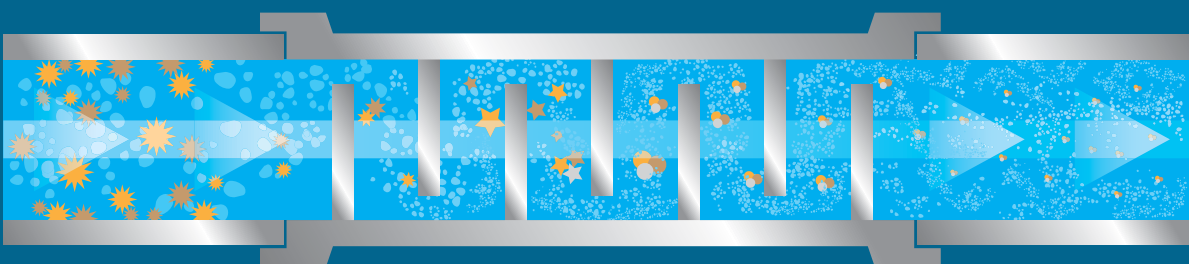


STANDARD WATER SYSTEM



Scale-causing minerals have a high electrical charge, repel each other and "stick" to pipes and equipment causing costly hard water problems.

WITH SOFTERWATER CONDITIONER



The softerwater alloy produces a turbulent mineral-attracting galvanic action reducing the electrical charge of minerals. Non-sticking nano sized colloids are formed and flow through the system in suspension significantly reducing hard water problems.

the Results+Advantages

Nuclei are introduced into the system providing an attractive site for minerals to combine as nano sized colloids which remain in suspension and flow through the system rather than precipitating on pipes and equipment. These subtle changes to the electrical charge of the minerals in water have significant effects on reducing down stream costly hard water problems!

- Softer, "wetter" water!
- Reduced hard water problems!
- Investment in capital equipment is protected!
- Reduced scaling and corrosion issues!
- Soaps, detergents and shampoos mix and lather better with softer water!
- Laundry items feel softer!
- Swimming pool water is clearer, softer, backwashing is reduced, scum lines are more easily cleaned away, salt water chlorinators work more effectively, there is no scale build up, black spot disappears and chemical usage is reduced!
- Water with a lower surface tension is more easily absorbed into the ground, reducing surface crust and runoff improving plant and crop health.
- Able to irrigate with brackish water

there is a
**softerwater
conditioner**
for every water
carrying system!



"We are always happy to share more information about this exciting technology. If you have a question or would like to arrange a meeting, please send us an email. We look forward to hearing from you"

Earl Mathieson CEO

business@softerwaterconditioners.com

there is only one perfect solution

Australian Made & Owned Since 1980 | Globally Distributed

